



- 1
- 2
- 3
- 4
- 5
- 6
- 7
- 8
- 9
- 10
- 11
- 12
- 13
- 14
- 15
- 16
- 17
- 18
- 19

MAIN SPECIFICATIONS

AISI 316 stainless steel precision casting
 - Matte finish (Ra < 0.8 µm) **MT**
 - Polished finish (Ra < 0.8 µm) **PL**

Sealing ring
 - H-NBR **H**

Temperature resistant -25 °C to +150 °C
 - EPDM **E**

Temperature resistant -40 °C to +120 °C
 - FKM **F**

Temperature resistant -5 °C to +200 °C
 - Blue
 - Hardness 85±5 Shore A
 - FDA compliant

FEATURES AND APPLICATIONS

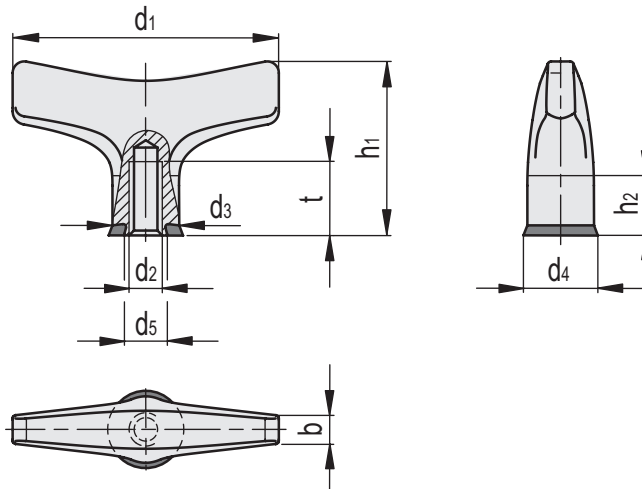
T-handles GN 5064 comply with the DGVU testing principles and are intended for use in hygienic areas. The version with PL finish is additionally certified according to the guidelines of the EHEDG. The sealed mounting surface enables mounting without dead spaces; the impervious geometry in combination with the high quality finish prevents the accumulation of dirt and facilitates cleaning.

T-handles are great for lifting, moving and operating parts or for clamping purposes by means of threads. The ergonomic shape allows for high operating forces.

The T-handles can also be used in particularly aggressive environments thanks to the material used.



NV 23193



Conversion Table	
1 mm = 0.039 inch	
d1	
mm	inch
63	2.46
80	3.12
100	3.90

GN 5064-MT-H

Code	Description	d1	d2	d3	d4	d5	b	h1	h2	tmin	⚖
GN.47632	GN 5064-63-M6-MT-H	63	M 6	16	16.8	12	7	41	12	12	110
GN.47636	GN 5064-80-M8-MT-H	80	M 8	21	21.8	17	9	52	15	16	223
GN.47640	GN 5064-100-M10-MT-H	100	M 10	25	25.8	21	11	65	19	20	429

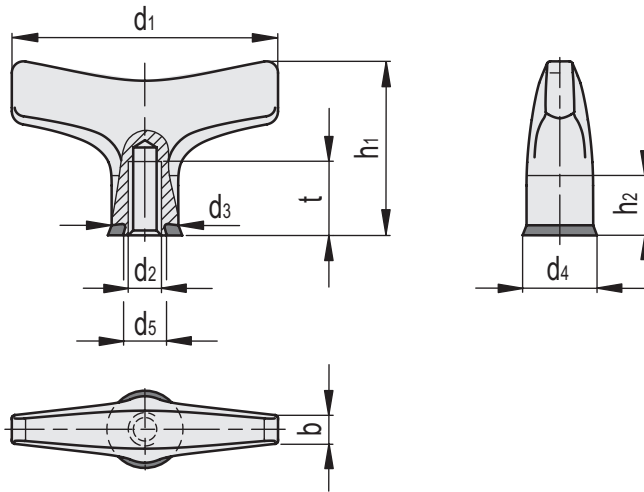
GN 5064-MT-E

Code	Description	d1	d2	d3	d4	d5	b	h1	h2	tmin	⚖
GN.47631	GN 5064-63-M6-MT-E	63	M 6	16	16.8	12	7	41	12	12	110
GN.47635	GN 5064-80-M8-MT-E	80	M 8	21	21.8	17	9	52	15	16	223
GN.47639	GN 5064-100-M10-MT-E	100	M 10	25	25.8	21	11	65	19	20	429

GN 5064-MT-F

Code	Description	d1	d2	d3	d4	d5	b	h1	h2	tmin	⚖
GN.47643	GN 5064-63-M6-MT-F	63	M 6	16	16.8	12	7	41	12	12	110
GN.47645	GN 5064-80-M8-MT-F	80	M 8	21	21.8	17	9	52	15	16	223
GN.47647	GN 5064-100-M10-MT-F	100	M 10	25	25.8	21	11	65	19	20	429

Fixed & Revolving handles



Conversion Table 1 mm = 0.039 inch	
d1	
mm	inch
63	2.46
80	3.12
100	3.90

GN 5064-PL-H

INOX STAINLESS STEEL **METRIC**

Code	Description	d1	d2	d3	d4	d5	b	h1	h2	tmin	⚖
GN.47634	GN 5064-63-M6-PL-H	63	M 6	16	16.8	12	7	41	12	12	110
GN.47638	GN 5064-80-M8-PL-H	80	M 8	21	21.8	17	9	52	15	16	223
GN.47642	GN 5064-100-M10-PL-H	100	M 10	25	25.8	21	11	65	19	20	429

GN 5064-PL-E

Code	Description	d1	d2	d3	d4	d5	b	h1	h2	tmin	⚖
GN.47633	GN 5064-63-M6-PL-E	63	M 6	16	16.8	12	7	41	12	12	110
GN.47637	GN 5064-80-M8-PL-E	80	M 8	21	21.8	17	9	52	15	16	223
GN.47641	GN 5064-100-M10-PL-E	100	M 10	25	25.8	21	11	65	19	20	429

GN 5064-PL-F

Code	Description	d1	d2	d3	d4	d5	b	h1	h2	tmin	⚖
GN.47644	GN 5064-63-M6-PL-F	63	M 6	16	16.8	12	7	41	12	12	110
GN.47646	GN 5064-80-M8-PL-F	80	M 8	21	21.8	17	9	52	15	16	223
GN.47648	GN 5064-100-M10-PL-F	100	M 10	25	25.8	21	11	65	19	20	429